

For each of the melodies below, write an extended version of the melody on the staff below, using extensions at beginning, middle, or end of the phrase as covered in class. (You don't have to use all three kinds in one melody, of course!) Keep your extension fairly short--only a measure or so.

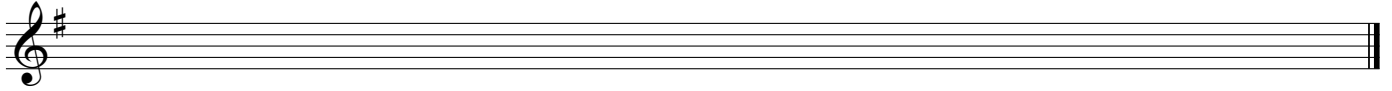
Place a bracket over your extension, and indicate the technique you used to create the extension.

The first melody is already done to show you how.

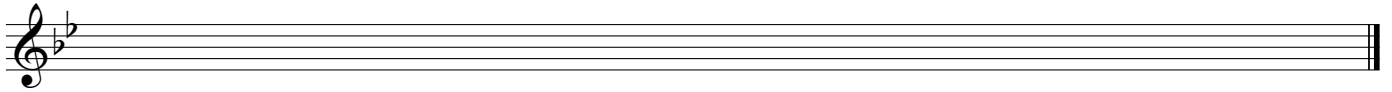
0 - Example



1



2



3

