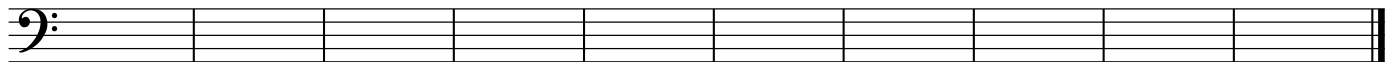


1. Given the key, Roman numeral, and figured bass, write the indicated triads. Use accidentals, not a key signature.



D: V₄⁶

1 2 3 4 5 6 7 8 9 10



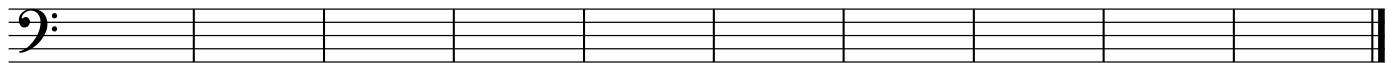
F: I₃⁶ ii₄⁶ IV₃⁶ V₃⁵ vi₃⁶ vii₃⁶ I₃⁶ IV₄⁶ V₃⁶ iii₄⁶

2. Given the key, Roman numeral, and figured bass, write the indicated triads. Use accidentals, not a key signature. Note: assume natural minor unless the Roman numerals or figured bass indicate otherwise.



f: III₃⁶

1 2 3 4 5 6 7 8 9 10



e: ii₃⁶ V₃⁵ VI₄⁶ III₃⁵ iv₃⁶ i₄⁶ V₃⁶ VI₃⁶ ii₄⁶ iv₃⁵